



Athlone/Dunvegan Community Newsletter

April 2011



It's the Athlone/Dunvegan Community League Big Bin Spring Clean Up!

Saturday, April 16th and **Sunday, April 17th**, the Athlone/Dunvegan Community League is hosting a big bin spring clean up.

We will have a big garbage bin set up in the Athlone Community Hall parking lot at 13010 - 129 St. Community league members can bring their household garbage to the bin free between the hours of **10:00 am to 5:00 pm** on Saturday and Sunday.

We can accept anything from construction and renovation material, wood/plywood, metal, drywall, cardboard, landscaping debris, electronics, mattresses, plastic, household refuse, furniture, appliances, dirt, compost and so much more.

We can **not** accept any hazardous wastes including paint, oil, tires, fridges or freezers.

Community League Memberships are required to be able to drop of refuse, and will be available for sale throughout the event. Hotdogs and pop will be available for \$2.00

So clean up your yards, garages and basements and drop it off with us!

Come out to the Athlone/Dunvegan Community League Annual General Meeting!

Tuesday, May 10th 2011, the Athlone/Dunvegan Community League has its Annual General Meeting at **7 pm** at the Athlone Community Hall, 13010 - 129 St.

It's time to start thinking about new programs and events for the community. If you would like to see something happening then please come out and voice your opinions.

This is the one time each year we really need you to come out and support your community league. We need a full quorum to elect the board, and offer your ideas.

Come out to meet your neighbors, and see what we can put together as a community!

Coffee and snacks will be served to all attending.



Message from the President

Shirley Frost

Another year has come and gone it has been a fairly quiet year for the Athlone Community League. We have had some very successful turn outs at the events the we have held over the year. With the Family Day Event; the Big Bin Event last April, which we will again do; the September Community Day event which was a huge success for us; and the Halloween Party, which was great fun. We hope to get the sports programs up and running for next year. We have a Baseball Director who is trying to get things up and running (Thank you Dave for all your efforts). The board is working very hard to get more involvement from the community as a whole to ensure that we can continue. Without the Volunteers to make things happen the community league may not be able to carry on. On May 10th please come out and see what the community league is all about and help us make a difference. My thanks to the present board for all the hard work that they do.

Your Current Community League Leadership:

President: Shirley Frost

Vice-President: Ron Glesby

Secretary: Christy Foley

Treasurer: Laura Foss

Membership: Laura Foss

Grants: Kris Gladu

Maintenance and Repair: Dave Gadd

Newsletter: Kathy Gadd

Information Tech: Christy Foley

Social Director: Kitty Glesby

Programs Director: Debra Mailhot

Area 1 Representative: Ron Glesby and Verne Fletcher

Community Recreation Coordinator: Kerri-Lynn Dwyer

Bingo: Shirley Frost

Casino: Shirley Frost

Equipment: Ron Glesby and Verne Fletcher

Karate: Don Jaud

Softball: Dave Gadd

Soccer: Vacant

Hockey: Vacant

Interested in Renting the Athlone Hall?

We offer a large hall seating up to 150. All rentals include use of tables, chairs, and our full kitchen. Guests at your event will enjoy themselves in air conditioned comfort. Plenty of parking is also available.

For more information regarding hall rentals, go to www.athlone.ca or contact Laura Foss at 780-886-5293.

Community Safety: Vacant

Fund Raiser: Vacant

Athlone Community Hall

13010 - 129 St., Edmonton AB, T5L 1J3

780-451-4016, athlone1@telus.net

Don't Forget the AGM!

Your Athlone/Dunvegan Community League needs your help!

The Athlone/Dunvegan Community League AGM is being held **Tuesday May 10th, 2011 at 7 PM** and we need your advice, opinions and support!

If you are interested in any of the community league positions or have ideas, questions or comments regarding the Athlone/Dunvegan Community League, come on out!

Athlone School Age Child Care

The Athlone School Age Child Care has spaces available for children in kindergarten to Grade 6. Hot lunches are offered along with field trips and special activities.

Located in Athlone Elementary School at 12940 - 129th St. and open from 6:30 am to 6:00 pm, including school breaks. Please call 780-451-5667 for more information.



Angelas Dayhome Away From Home

Hello Moms and Dads! My name is Angela Weir and I have some spots open for children ages 1 year to kindergarten. I live here in Athlone, close to parks and schools. I provide healthy snacks and lunch.

Please contact me at 780-452-0983.



Athlone Bingo Dates

Our programs are funded in part by the generosity by the bingo halls that have allowed us to work them. Come out and support the Athlone Community League either by playing or helping us work the Bingos!

Future Bingo dates at E.N.E.B.A.
(12711 - 52 St. NW Edmonton)

April 28th
May 1st
June 11th
July 2nd
August 7th

For more information or to volunteer for a Bingo, please call Shirley at 780-454-9227.

Traditional Karate

Athlone Community Hall
13010 - 129 St.

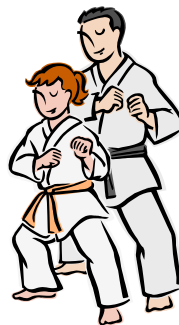
Ages 10 and up welcome.

Try it for 2 weeks FREE with no obligation!

Cost is \$20/Month, payable quarterly (less that \$2.50 per class). Also ask about our family rates.

Monday and Thursday 7-9 pm.

Call Dan Juad at: 780-458-2772



N&T Hair Straight

Located at 12918 - 127 St.
Phone: 780-488-1648

Open:

- ❖ Tues – Sat 9:30 am – 6:30 pm
- ❖ Sunday 10:30 am – 4:30 pm
- ❖ Closed on Mondays and holidays

Walk-ins welcome.

Gift Certificates Available.

Mens cuts \$15, Womens cuts \$22, including shampoo and styling.

We would like to thank all of those who have supported us throughout the year! We appreciate your patronage!

Athlone/Dunvegan Community

Annual General Meeting



Tuesday May 10, 2011

7:00 PM

Athlone Community Hall
13010 - 129 St., Edmonton

It's time to start thinking about new programs and events for the community. If you would like to see something happening then please come out and voice your opinions.

This is the one time each year we really need you to come out and support your community league. We need a full quorum to elect the board, and if you can help us with any of the positions below, please let us know!

Come out to meet your neighbors, and see what we can put together as a community!

Coffee and snacks will be served.

Athlone /Dunvegan Community League Board Positions

President	Area 1 Representative
Vice-President	Bingo Director
Secretary	Casino Director
Treasurer	Equipment Director
Membership	Karate
Grants Director	Softball
Maintenance and Repair	Soccer
Newsletter	Hockey
Information Tech	Community Safety
Social Director	Fund Raiser
Programs Director	

Athlone/Dunvegan Community

Big Bin Spring Clean Up



Saturday April 16th, and
Sunday April 17th, 2011

10:00 am to 5:00 pm
Both Days

Athlone Community Hall
13010 - 129 St., Edmonton

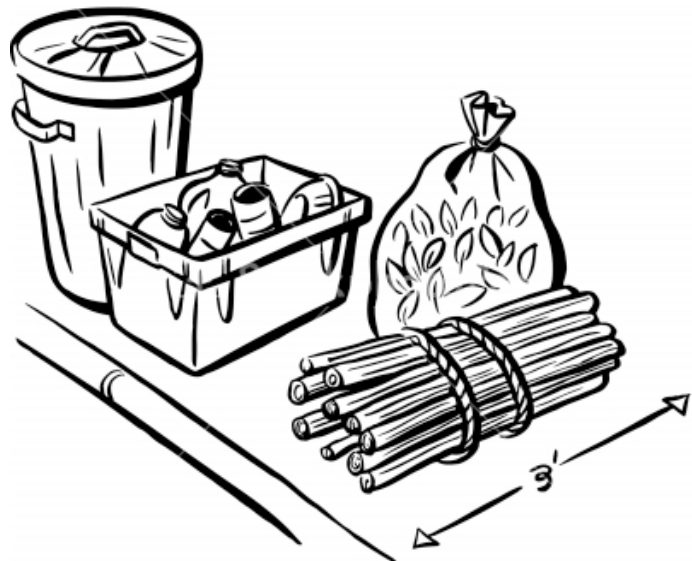
We will have a big garbage bin set up in the Athlone Community Hall parking lot at 13010 - 129 St. Community league members can bring their household garbage to the bin for free.

We can accept anything from construction and renovation material, wood/plywood, metal, drywall, cardboard, landscaping debris, electronics, mattresses, plastic, household refuse, furniture, appliances, dirt, compost and so much more.

We can **not** accept any hazardous wastes including paint, oil, tires, fridges or freezers.

Community League Memberships are required to be able to drop off refuse, and will be available for sale throughout the event.

So get the jump on spring and clean up your yards, garages and basements and drop it off with us!





Calder Library

Kensington Mall
12522-132 Ave.

Check out the upcoming programs and events happening at Calder Library!

Online Payment and Renewals Did you know you can make account payments or renew your library card from the comfort of your home, office, or wherever you have Internet Access? Visit www.epl.ca/renew, log in, check your Borrowing or Account Settings to see if you have any late charges or if your library card is about to expire. Pay the bills or renew your card with a couple quick clicks!

Questions? Contact the Calder Library (780) 496-7090 or visit us at www.epl.ca.



Upcoming Festivals and Special Events

For more information visit: www.festivalcity.ca or www.discoveredmonton.com or call 311.

Edmonton Kiwanis Music Festival
April 18 to May 7, 2011

Edmonton Poetry Festival
April 25 to May 1, 2011

Community League Wellness Program

Grand Trunk 13025 - 112 St.

Community League Swim

Sunday 4:15-5:45 pm

Friday 7:00-9:00 pm

Just show your valid Athlone/ Dunvegan community league membership for entry.

OR: Present your valid Edmonton community league membership card at any one of the City of Edmonton's sports and fitness facilities and choose from the following Community League Wellness Products:

Annual Pass* - 20% discount on Adult, Family, Child, and Youth/Senior Annual Passes

Multi Admission Pass* - 15% discount on our already discounted multi admission pass (10+ visits)

Continuous Monthly Pass – 20% discount off an on-going monthly membership pass using our convenient Pre-Authorized Debit Program.

Opera NUOVA presents Vocal Arts Festival 2011
May 20 to June 23, 2011

St. Albert Kinsmen Rainmaker Rodeo & Exhibition 2011
May 27 to May 29, 2011

Tim Horton's presents the International Childrens Festival 2011
May 31 to June 4, 2011

That's Not Garbage!

If you've ever puzzled over where to pitch your pizza box, the City of Edmonton's newly expanded times for their free seminar on recycling will help you find the answers.

"We've been offering our "That's Not Garbage!" sessions to Edmonton businesses for some time now," explains Garry Spotowski, education programs coordinator for the city's Waste Management Branch.

"But now we want to reach out to all community groups, seniors' societies, church organizations...essentially any small or large group of fifteen or more adults interested in learning about recycling and our world-class waste management system. We'll come to their assembly anytime - days, evenings, even weekends. Edmonton's system is one of the best anywhere. We'd like to make sure people know all about it."

There's no charge for the "That's not Garbage!" presentation. Call 780-496-5681 to book or email wasteman@edmonton.ca.



CENSUS • RECENSEMENT

ART-99-11-E

The 2011 Census is coming!

Canada's next census will be held in May 2011.

Early in May, yellow census packages will be delivered to every dwelling in Canada, providing residents the information they need to complete the census online or on paper. Completed questionnaires will provide valuable information that will be used by all levels of government to make decisions about your neighbourhood and community.

Census information is important for all communities and is vital for planning services such as schools, daycare, police services and fire protection.

Every person, young and old, must be included in the 2011 Census. For more information about the 2011 Census, visit www.census2011.gc.ca. National Household Survey

In addition to the 2011 Census, some residents will be asked to participate in the new National Household Survey (NHS). The information collected in the NHS will provide data to plan and support family services, housing, roads and public transportation, and skills training for employment.

Your information will help paint a detailed and comprehensive picture of Canadian society. If you receive the NHS, support your community and complete the survey.

The 2011 Census: Join the team!

Want to make a lasting contribution to Canada, its community and its people? Here's your opportunity. Join the 2011 Census team!

Statistics Canada is hiring nearly 35,000 field staff across Canada to work on the collection phase of the 2011 Census. Canada's next census will be held in May 2011.

Staff are required for a variety of supervisory and non-supervisory positions between March and mid-August 2011. These non-office jobs require work in neighbourhoods and communities in all urban, rural and remote areas of the country. Screening of applications will start in mid-February.

The rates of pay range from \$14.72 to \$18.04 an hour, plus authorized expenses.

About 5,000 crew leaders and assistants and around 30,000 census enumerators will be hired. Crew leaders train, lead and supervise a team of enumerators. Enumerators distribute census questionnaires, conduct personal interviews and do follow-up interviews by phone.

Applicants must be at least 18 years old, eligible to work in Canada, and able to commit at least 20 hours a week, including days, evenings, weekends and holidays as required. They will need a driver's licence and access to a vehicle in some areas. Computer literacy and a home computer with an Internet connection are assets.

For more information and to apply online, go to www.census2011.gc.ca.